



Street Atlas USA 7.0

User Guide

B A R R Y B E C K

portfolio

Copyright May 2000

This manual was written by Barry Beck for the Webster Institute.

Barry Beck

1530 Gough

San Francisco, CA 94109

This guide was printed on recycled paper.

Contents

Contents	3
Overview of Atlas	4
Navigating a Route	10
Find your Location	10
Decide Your Start Point	11
Decide Your Finish Point	11
Plot Your Route	12
Insert Stops	12
Moving Around Street Atlas	14
View Menu	14
Toolbox	16
The Mouse	17
Overview Map	18
Detailing a Trip	20
Customizing Routes	21
Getting Help and Using the Internet	26

Overview of Atlas

Welcome to Street Atlas USA 7.0. You have in your possession a versatile interactive street atlas with superior map detail and over three million points of interest. It will assist the individual, family or business in finding addresses, planning trips, and locating points of interest.

There are several ways to find a location on the map, and you can customize the route to your own specifications. Street Atlas USA will assist you in preparing your route and writing instructions and directions toward your destination.

Here are some attributes and usages of Street Atlas USA.

- Finding addresses / phone numbers
- Planning routes
- Landmarks
- Cities / towns / capitals
- Waterways
- Museums
- Rest stops
- Information
- Latitude & longitudinal references
- Weather forecasts
- Events
- Radio stations
- Finding a restaurant
- Looking for a job
- Creating directions for your party guests.

In this chapter, you will gain an overview of some of these feature by taking a trip from San Francisco to Salt Lake City

Planning Your Route

The first step is to decide the starting point.

1. Type “San Francisco, CA” in the **Start box** next to the green circle.
2. Press **TAB** to bring you to the **Finish box**.

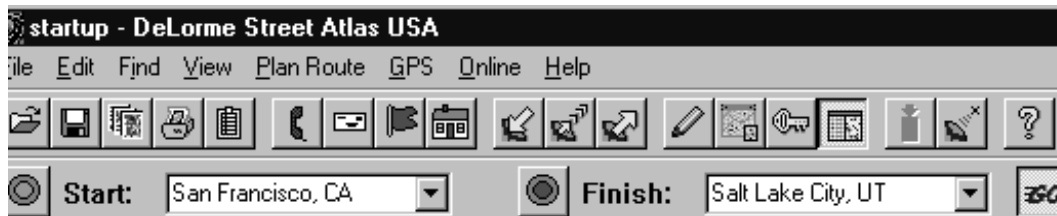


FIGURE 1. Planning the route using the Start and Finish boxes

3. In the **Finish box** type “Salt Lake City, Ut”.
4. Press **ENTER**.

Street Atlas will then calculate your most convenient route.

You can now see how to get to Salt Lake City visually by following the map on the right and verbally by reading the directions on the left.

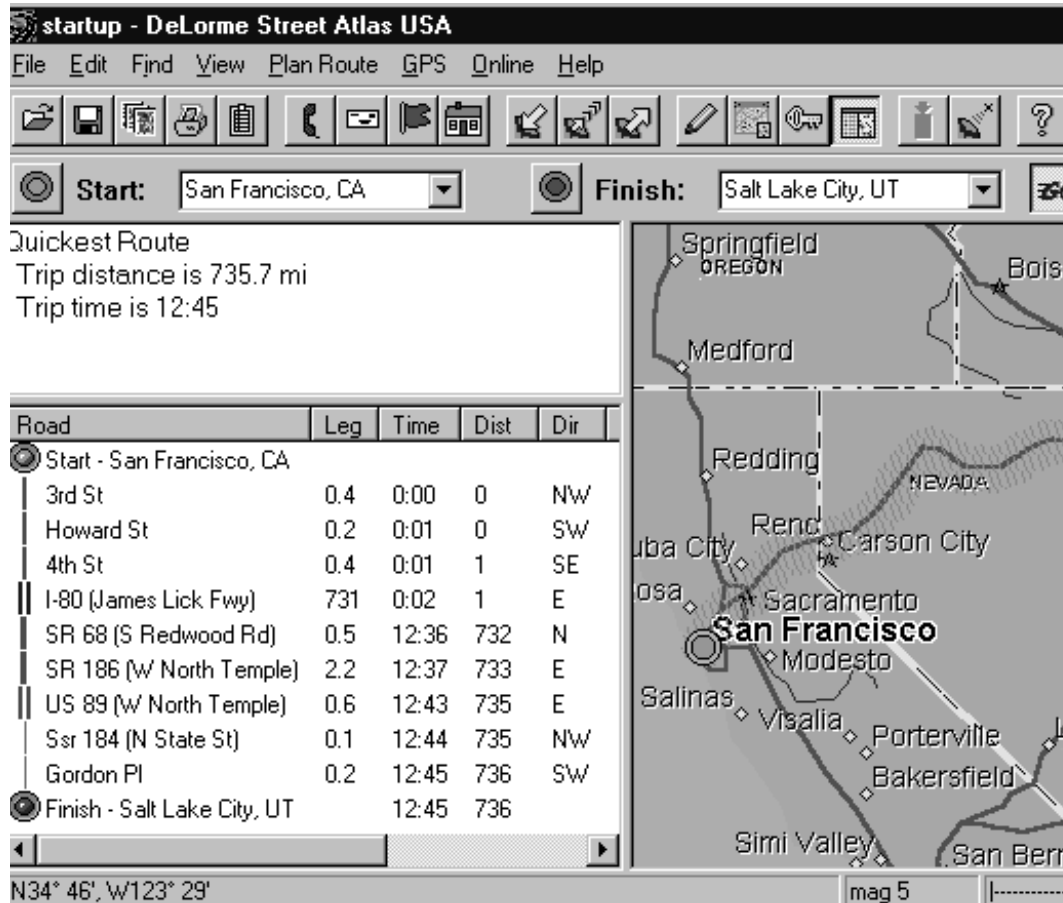


FIGURE 2. Directional Route and Map from San Francisco to Salt Lake City

Saving a Map File

You can save a set of instructions, maps and routes.

To save a map and set of instruction as a file:

1. From the **File menu**, select **Save As**.
2. Select the folder of your choice.

3. Type “saltlake” in the **File Name box**. Street Atlas USA automatically adds an extension called “SA6” to the file.
4. Press **Save**.

Printing maps, directions and instructions.

For portable usage, print the map or directions.

To print the map:

1. On the **File menu**, press **Print Current Map**.
2. Choose a title name for the map in the **Map Title box**.
3. Center the map by using directional buttons.
4. Use arrow buttons at the bottom of the **Print dialog box** to zoom in and out to get the view you prefer.

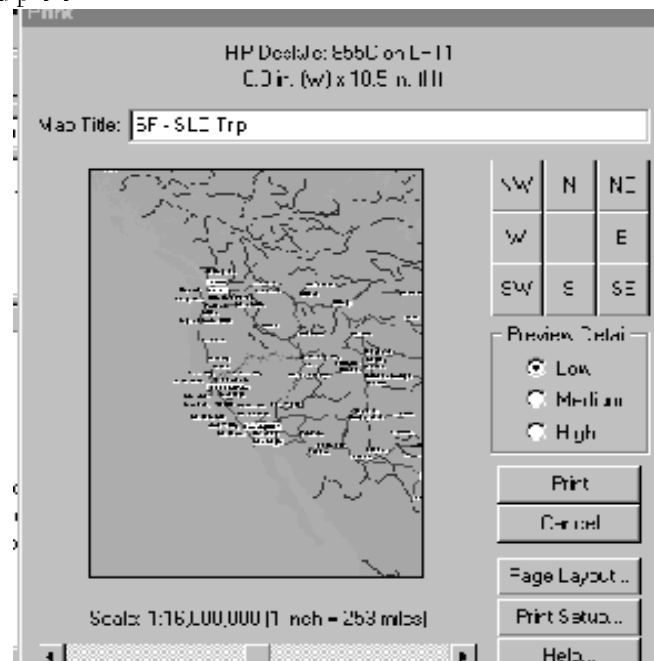


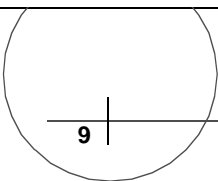
FIGURE 3. Print dialog box

5. Choose **Page Layout**.

6. Select the bottom-left layout.
7. Select **OK**.
8. Select **Print**.

To print the driving instructions / directions:

1. From the **File menu**, select **Print Travel Package**. The **Print Travel Package dialog box** will pop up.
2. Check the box next to **Directions**.
3. From the **Miles drop-down menu**, select the amount per page.
4. Select box next to **Detailed Maps**.
5. Select **Print**.
6. You will print the driving instructions along with the map.



Navigating a Route

Your Atlas will show you different points of interest on a map and produce the best route. In this section we will demonstrate the appearance of the display, alignments, use of toolbar, zooming in and out and integration of map with verbal instructions. You will learn to:

- Find your Location
- Decide your Start Point
- Decide your Finish Point
- Plot your Route
- Insert Stops

Find your Location

First you must decide your point of origin or where you presently are located.

Locate by Place Name

If you want to find a particular city on the map, but you don't have an address, do the following:

1. On the **Find** menu, choose **Locate by Placename**.
2. In the **Locate by box**, enter the name of a city and state.
3. Select **OK**.

Locate by Address

You can find an exact location of a house or office building with a complete address.

1. Using the **Find menu**, choose **Locate by Address**
2. In the **Locate by Address Box**, type address.
3. Select **Search**.

A map comes up with the address in the center, marked by a crosshair and a house.

Locate by Zip Code

1. On the **Find menu**, choose **Locate by Zip Code**.
2. Type zip code in the **Locate by Zip Code box**.
3. Click **OK**.

Locate by Phone Number

1. On the **Find menu**, select **Locate by Area Code and Exchange**.
2. In the **Locate by Area Code and Exchange box** enter the area code, a hyphen, and the prefix of the phone number.

The **Locate by dialog box** comes up with several prefixes.

3. Double-click on the correct prefix.

The map appears, showing you the location of your phone number.

Decide Your Start Point

Select a location as a Start Point.

1. Right-click on 'House' icon.
2. Select **Set as a Start**.

Street Atlas will designate **Start Point** with a green circle icon.

Decide Your Finish Point

1. Find a location.
2. Right-click on that location.
3. Select **Set as Finish**.

Plot Your Route

Once you have selected a **Start Point** and a **Finish Point**, you're ready to calculate your route.

Note: You can now select and calculate your route, but if you select Automatic Calculation, the Atlas will calculate the route on its own.

1. From main menu, select **Plan Route**.
2. Select **Calculate Route**.
3. You can select the **Quickest**, **Shortest**, **Preferred**, or most **Scenic** route.

Your Street Atlas will plot the route as it creates the directions. It will contain the following attributes:

- Total distance.
- Trip time.
- Length in miles and time for each leg of the trip.

Insert Stops

To designate a location as a **Stop** on your trip:

4. Right-click on that location.
5. Click on **Set as Stop or Via**.

13

INSERT STOPS

Moving Around Street Atlas

In this chapter, we will discuss the further uses of the toolbar:

- View menu
- ToolBox
- Mouse
- Overview Map

View Menu

To use the **View menu** select **View**. You will find your choices and features below.

<u>Z</u> oom In 1 Mag	PgDn
Z <u>o</u> om Out 1 Mag	PgUp
Z <u>o</u> om Out 4 Mags	Home
✓ R <u>o</u> ute on Map	Ctrl+R
✓ R <u>o</u> ute <u>D</u> irections	F11
✓ <u>E</u> xit Symbols	
R <u>o</u> ute <u>V</u> ias	
O <u>n</u> e- <u>W</u> ays and Road Edits	
M <u>a</u> p F <u>e</u> atures...	Ctrl+M
✓ <u>O</u> verview Map	Ctrl+W
✓ <u>L</u> egend	F9
M <u>a</u> p G <u>r</u> ids	
✓ M <u>a</u> p Center Cross <u>h</u> air	
M <u>o</u> bile M <u>a</u> p Colors	
M <u>a</u> p T <u>o</u> olbar	
✓ R <u>o</u> uting T <u>o</u> olbar	
✓ T <u>o</u> olbox	
✓ S <u>t</u> atus Bar	
D <u>e</u> fault I <u>n</u> terface	
C <u>l</u> assic Interface	

FIGURE 4. View Menu

Choosing the features from the **View menu** will give you these results:

Zoom Features	Changes the magnitude, giving you a more or less-detailed view.
Route on Map	Highlights the calculated route on the map.
Route Directions	Displays the route directions next to the map.
Exit Symbols	Displays freeway off-ramps with exit services.
Map Features	Selects features you want displayed on the map.
Overview Map	Displays a compact map showing distant boundaries.
Legend	Displays a key to common symbols on the map.
Map Center Cross-hair	Centers the desired location.
Map Toolbar	Gives you access to simple commands using buttons.
Routing Toolbar	Lets you design quick routes from PlaceName to PlaceName.
Toolbox	Gives you access to quick point-and-click options.
Status Bar	Displays scale and magnitude of current map.

Toolbox

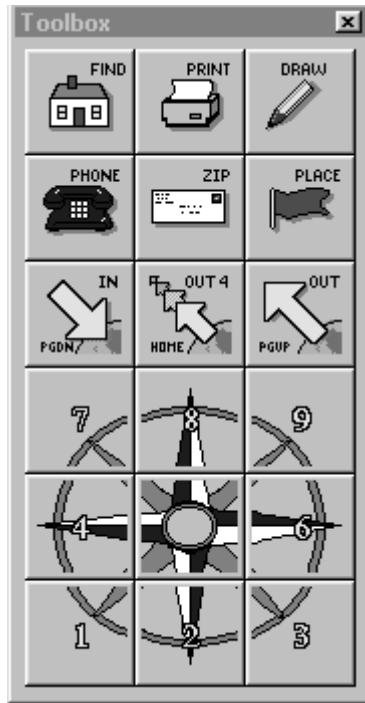


FIGURE 5. Toolbox

Here are the results of the **Toolbox** buttons.

Find	Finds a specific address within a selected city.
Print	Prints the map on the screen.
Draw	Brings up the Draw Palette.
Phone	Finds a location by area code and prefix.
Zip	Finds a location by zip code.
Place	Finds a place.
Zoom In 1 Mag	Changes the magnitude of the screen.

Zoom Out 4 Mags	Changes the magnitude of the screen.
Zoom Out 1 Mag	Changes the magnitude of the screen.
Compass Rose	Changes the direction of the map by half a screen, depending upon on where you click.

The **Map Toolbar** will allow you to complete tasks by selecting a particular icon.

*Note: Be sure to select **Map Toolbar** from the *View* menu.*



FIGURE 6. Map Toolbar and Routing Toolbar

The Mouse

You can experiment and right click the mouse to be able to select many choices without resorting to the toolbar.

Overview Map

The **Overview Map** streamlines your navigation, making it easy to move from place to place with just a click or two. The point where you click on the **Overview Map** becomes the center of your larger map on the screen. The **Overview Map** window can be moved or resized.

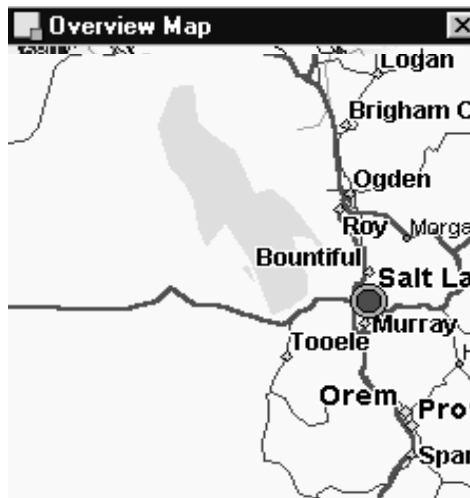


FIGURE 7. Overview Map

Detailing a Trip

Some additional attributes of Street Atlas are:

- Rest Stops, landmarks, waterways, museums, restaurants, banks, information, parks
- Radio Stations
- Latitude and longitudinal references
- Miscellaneous Features such as Weather forecasts and Events

Rest Stops and other Landmarks

You can find listings for banks, gas stations, restaurants, hotels, information and many other services.

1. You can place the cursor on the **Exit Services** icon. It is a rectangle with colored, geometric shapes.
2. From the pop-up menu select **Exit Services**.

An **Exit Services Information box** appears, telling you what is available if you choose any particular stop.

Radio Stations

You can obtain a listing of radio stations along with with the type of music or news service provided by each station.

To find a list of local radio stations:

1. Right-click anywhere on the map.
2. From the pop-up menu, select **Radio Coverage**.

A list of radio stations appears as with the Salt Lake City area on the next page:

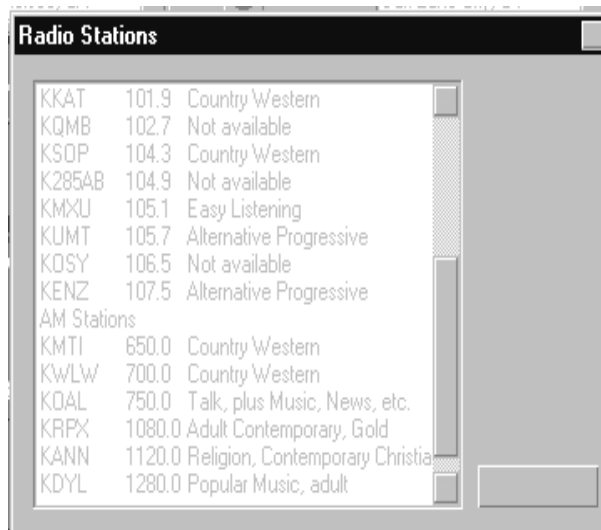


FIGURE 8. Radio Stations from pop-up menu

Customizing Routes

Street Atlas provides several ways to customize your route. You can also avoid locations if you choose to do so.

Avoiding Areas

If you prefer to avoid a certain area, all you have to do is draw a circle around that location. See “Draw Circle Tool” on page 5-5.

To create an **Avoid Area**:

1. Place the cursor on the edge of the circle.

A dashed rectangle appears.

2. Right-click.
3. From the pop-up menu, select **Avoid**.

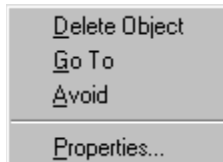


FIGURE 9. Circle pop-up menu

Clearing Avoids

You can easily clear Avoids:

- From the **Plan Route menu**, select **Manage Route**.
- Select **Clear All Avoids**.

Assigning Characteristics to Specific Roads

If you want to incorporate a “one-way street” or a “no left turn” into your route, you can assign a characteristic to a specific street.

1. Zoom in several mags until you can pick out a specific street.
2. Right-click over the street.
3. Select Edit Roads from the pop-up menu.

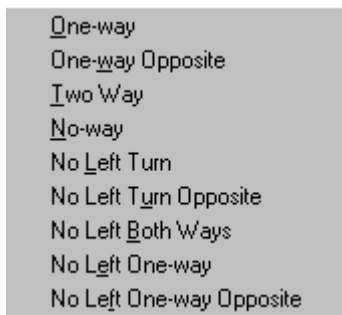


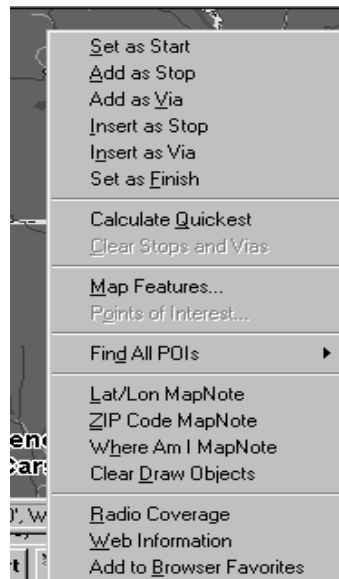
FIGURE 10. Edit Roads pop-up menu

4. Select the characteristic of your choice.

Street Atlas USA places a corresponding symbol that designates the new characteristic.

Latitude and Longitudinal References

You can obtain the latitude and longitude of any specific geographical location:



1. Right-click anywhere on the map.
2. Select **Lat/Lon MapNote** from the menu.

FIGURE 11. Pop-up Menu

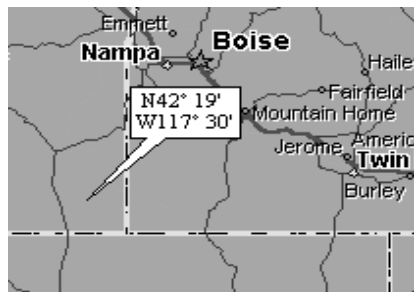


FIGURE 12. Latitude and Longitude notation

Weather Forecasts, Events and Additional Features.

You can experiment all around the atlas by right clicking the mouse as in Figure 11 to find many other useful features for your trip. In the next chapter you will see how to go online for cultural events and other up to date features. For Instance to obtain a weather report:

1. From the **On-line menu**, click **Weather**.

Street Atlas USA gathers and displays available weather information.



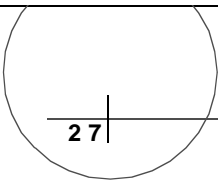
FIGURE 13. On-line menu

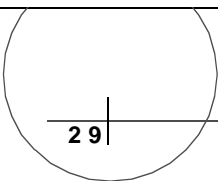
2. Right-click on a weather symbol.
3. Click **Weather Information** to view the weather for that place.

Getting Help and Using the Internet

There are many ways to get additional help and receive **Technical Support** from Street Atlas:

1. To go on the Internet go to the **On-line menu**, and choose **DeLorme on the Internet**
2. You can also go to www.streetatlasusa.com for answers to common questions and help with troubleshooting. At the Web site you will find:
 - a map store
 - current Delorme products and upgrades
 - customer support
 - a search index
3. If your question is not addressed, E-mail our technical support staff at: support@delorme.com
4. Or send a message to our fax line at 207-846-7051
5. Or call our Technical support line at 207-846-8900, Monday through Friday





29

A

address, locating by 11
area code and exchange,
 locating by 11
avoiding areas 21

C

clearing avoids 22
customizing routes 21

D

decide your Finish Point 11
decide your Start Point 11

E

e-mail support 26

F

fax support 26
Find 11
find your location 10
Finish Point, setting 11

G

getting help / using the
 Internet 26

I

insert stops 12

L

latitude / longitudinal
 references 23
locate by address 11
locate by phone number 11

locate by place name 10
locate by zip code 11

M

mouse, navigating with 17

N

navigating
 mouse 17
 Overview Map 17, 18
 Tool Box 16
 View menu 14
navigating a route 10
navigating the screen 14

O

online information and
 support 26
Overview Map 18

P

phone support 26
placename, locating by 10
plot your route 12
plotting a route 5
printing the map and
 directions 7

R

radio stations 20
rest stops and other
 landmarks 20
road characteristics
 assigning 22
route

 plotting 5, 12
route, plotting 12
routes, customizing 21

S

saving a map 6
Stops and Vias, inserting 12

T

technical support 26
Tool Box 16

V

View menu 14

W

Web, information from the 26

Z

zip code, locating by 11